

PRODUCT PARAMETER



SPECIFICATIONS

Operating Weight	1000KG
Bucket Capacity	0.016M³
Swing Speed	0-8rmp
Climbing Angle	30°
Max.Bucket Digging Force	7.2KN
Max.arm Digging Force	4.6KN
Engine Model	BRIGGS & STRATTON/KOOP
Oil Tank Capacity	10L
Fuel Tank Capacity	15L

OPERATING RANGE

Max.Digging Height	2400mm
Max.Unloading Height	1670mm
Max.Digging Depth	1650mm
Max.Vertical Digging Depth	1500mm
Max.Digging Radius	3000mm
Min.Rotation Radius	1605mm

MAIN DIMENSIONS

Machine Size	2784x968x2143mm
Track Distance	760mm
Minimum Ground Clearance	100mm
Tail Swing Radius	800mm

SHANDONG CARTI MACHINERY CO., LTD

- Tel:+86 0537-2330670
- Fax:+86 0537-2330670
- Add: Jining High-tech Zone, Shandong Province, China
- Email: Cartiwell@126.com
- Note: Due to the technical upgrade, the actual product may be different from that shown. Charts, photos and information are for reference only.

Small and flexible D,
stable operation, mechanical properties in the first place.



CW-10

ALL-TERRAIN UNIVERSAL MINI EXCAVATOR



ISO 9001
CE
EPA
EURO5

FUNCTION CW-10

POWERFUL AND SAFE

From excellent lifting capacity to incredible operator comfort, cw-10 helps you improve your work efficiency

CW-10 completed the work that large excavators could not operate. The combination of strong breakthrough force and the ability to operate the pilot control hydraulic function makes this work more effective.

360° direction rotation

The cw-10 mini excavator supports 360° body rotation and shakes the handle to control the construction direction to improve your construction quality.

hydrocylinder

The hydraulic transmission system has the characteristic of high transmission efficiency, which can fully utilize the power of the engine.

Integral welding

The large and balanced arm and bucket design of cw-10 has strong digging ability, and it can dig faster and deeper (1650mm), which can meet the needs of different digging depths.



One-piece casting-swing arm root

The hub of the swing arm root used in cw-10 is integrally cast, and there is no welding trace, which greatly improves the efficiency and service life.

Roof cab/fully enclosed cab

You can choose your own cab, and you can customize the unique color of the machine.

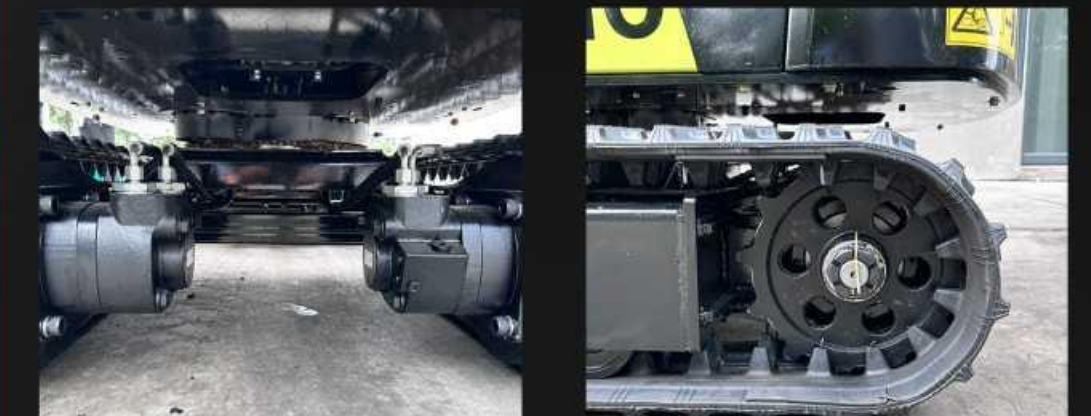
Luxury comfortable seat

Drain the heat accumulated inside the machine to prevent the machine from overheating.



Track extension

The rails with different widths can be changed according to the working conditions, thus improving the adaptability and practicability of the machine. Whether operating in a small space or maintaining stability and mobility in an open field, it can be used with ease.



ENERGY AND DRIVING

HIGH QUALITY ENGINE BRIGGS & STRATTON/KOOP



We upgraded the engine. The engine with high performance and low fuel consumption is adopted to provide sufficient power support. By optimizing the combustion process and reducing friction loss, lower fuel consumption is achieved. Therefore, CW-10 provides more powerful functions and reliability for your work. **The power of the engine is matched with the capacity of the hydraulic system to maximize the digging and lifting performance. Operators also benefit from minimal noise and vibration.**

HYDRAULIC DRIVE PRECISE CONTROL OF FLOW



In the manufacturing process of the CW-10, precise industrial welding, heat treatment and other processes are carried out to ensure its compact structure and firm connection, and can meet the needs of various complex working conditions. The hub of the swing arm root used in CW-10 is integrally cast, the service life is longer, the frequency of maintenance and replacement is reduced, and the use cost is reduced. **Different sizes of assistive devices can be selected according to needs to meet different work needs.**

WIDE DRIVING VISION THE HANDLE IS EASY TO OPERATE



SIMPLE OPERATION LARGE DRIVING SPACE



The foot placement area of mini excavators is usually spacious, which provides enough space for operators to comfortably place their feet. This design is helpful to reduce the fatigue of the operator when working for a long time and improve the work efficiency. At the same time, the footrest area is usually equipped with anti-slip materials or designs to ensure that the operator can maintain a stable standing posture during the operation and avoid safety accidents caused by accidents such as slipping.

OPERATING WEIGHT
up to
1000KG

1650mm
max
DIGGING DEPTH

