

# CW-20U

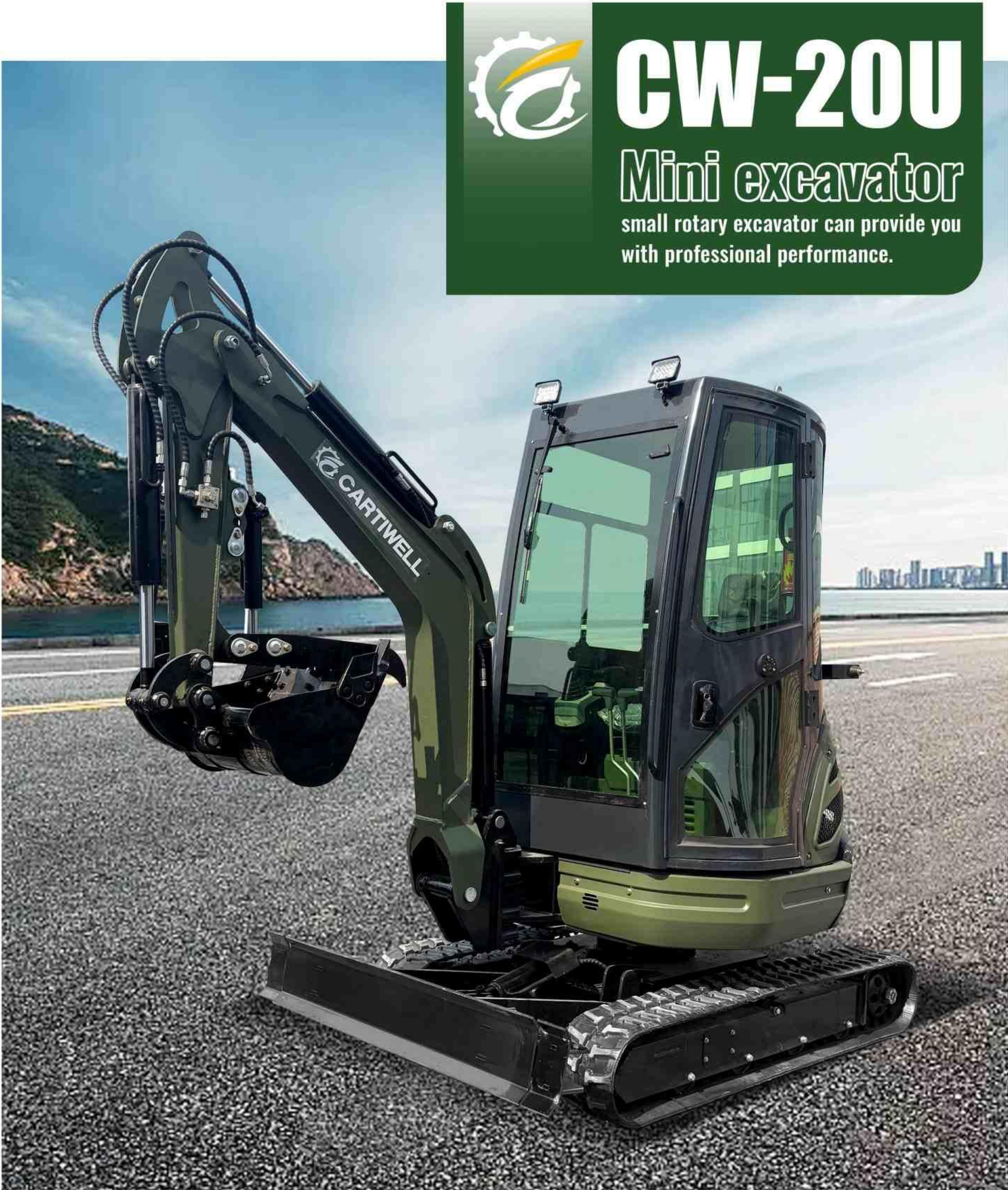
## PRODUCT PARAMETER

Working weight (kg)	2550	Total height (mm)	2250
Bucket capacity (m³)	0.054	Shovel width/height (mm)	1200-1400/226
Low/high speed (Km/h)	0-1.8	Fuel Tank (L)	15.9
Climbing ability (%)	15	Hydraulic Tank (L)	21.6
Maximum excavation height (mm)	2540	Engine brand	kubota
Maximum unloading height (mm)	1876	Engine type	D902
Maximum digging depth (mm)	2260	Maximum power (Kw)	18.4
Maximum digging radius (mm)	3725	Maximum speed (rpm)	2300
Side swing Angle (left/right)	92.7°	Number of cylinders	3
Chassis expansion	1200-1400	Cooling method	water-cooling
Total length (mm)	4100	Engine oil change (L)	1.1
Total width (mm)	1400	Fuel type	Diesel oil
Fuel Label	Number 5 /-0	Multiway valve	Electronically controlledload sensitive multiway valve
Theoretical fuel consumption (L/h)	0.5-1.2	Multiway valve brand	TAIFENG PUMPS
Main pump type/Model	TFA10V028LADS/53R	Rated pressure (Mpa)	18.5
Main pump brand	TAIFENG PUMPS	Travelling wave pressure motor type	612-4174-1
Rated pressure (Mpa)	25	Walking motor Brand	Eaton
Maximum flow of main pump (L/min)	21.6	Rotary hydraulic motor type	SW2.5K-245

**CARTIWELL**  
**Shandong Carti Machinery Co., Ltd**  
Tel: +86 0537-2330670  
Fax: +86 0537-2330670  
Email: Cartiwell@126.com  
Add: Jining High-tech Zone, Shandong Province, China  
\*Our products are subject to improvements and changes without notice

GET THE  
1YR/1000HR  
**FREE**  
**SERVICE**

**ORIGINAL  
CARTIWELL  
TOOL BAG**  
For maximum performance  
durability and safety



ISO EPA EURO5

**CARTIWELL**



# SUPERIOR PERFORMANCE



## hydraulic pressure system

The hydraulic transmission system has the characteristic of high transmission efficiency, which can fully utilize the power of the engine.

## Powerful breakout force

The cw-20U delivers an impressive bucket breakout force. The powerful and well-balanced arm and bucket design allows the operator to dig faster, deeper and more efficient even in the toughest conditions. The working range for reach and dig depth are excellent that operators will appreciate in terms of daily productivity.



## One-piece casting swing arm root

The hub of the swing arm root used in 20U is integrally cast, and there is no welding trace, which greatly improves the efficiency and service life.

## Track extension function

The crawler extension function enables small excavators to choose different widths of crawler according to the working conditions, thus improving the adaptability and practicability of the machine. Whether operating in a narrow space or maintaining stability and mobility in a spacious venue.

## Simultaneous operation

Many jobs require the simultaneous operation of the boom, arm, bucket, and swivel for efficient operations. The variable displacement pumps that distribute a correct amount of oil flow to each function according to the joystick lever stroke.

## Optional cab

Roof cab & fully enclosed cab, handle-shaking operation, comfortable operating environment and easy work.



## Hidden motor

The design makes it better integrated into the overall structure of the excavator, better protected, better isolated from noise and vibration, and makes the excavator more stable and quiet during operation. This has greatly improved the comfort and work efficiency of operators.





# MANTENANCE & SAFY

With the CW-20U, operators can work with confidence knowing they are protected on both the open station or optional enclosecab. Furthermore, the engine compartment is ergonomically organized with easy access to the radiator and engine oil cooler to make routinemaintenance andinspections a breeze.



## KUBOTA D722/D902/D1105 Engines are optional

We upgraded the engine. As a resultthe CW-20U delivers the more power and reliability you need for your work. The engine power is matched with theabilities of the hydraulic system to maximize diggingand lifting performance. Operators also benefit from theminimal noise and vibration.

- A. Engine exhaust pipe
- B. Hydraulic oil cooler
- C. Hydraulic oil tank
- D. Load-sensitive multi-way valve

## Excavator side guard

When some parts fail or need maintenance, opening the back cover can easily approach and solve the problem without disassembling the whole excavator.

# CAB DETAILS

## High-back suspension seat

The cw-20U deluxe high-back seat increasesproductivity byproviding optimum comfort foroperators of all sizes

## Wrist rests

Adjustable wrist rests help reduce armmovement andincrease operatorcomfort for greater work efficiency



## throttle lever

Locate the throttle lever, whichshould look as shown. Hold it send, hold down the button located on top, and push theleveraway from you.

## Two-patternSelection System

The function of shaking the operatinghandle is mainly to control themovement, rotation, grasping and armmovements of the excavator, and thedriver needs to master the operatingmode of the handle skillfully



## Concealed service entrance

Under the driver's seat, there is a hidden maintenance entrance protection cover, which is humanized. When the machine parts fail, they can be disassembled and replaced in time.



## Wider foot area

Cw-20u is more spacious than many traditional tailshaft excavators. The wider foot area improves the operator's comfort and reduces the operator's fatigue.

