

SPECIFICATIONS

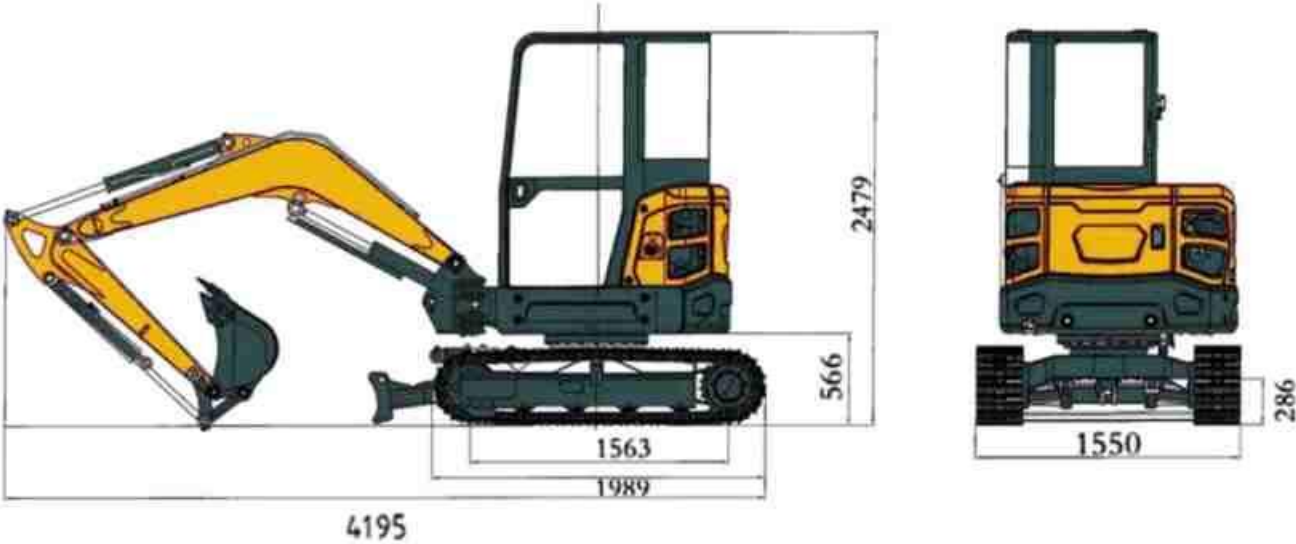
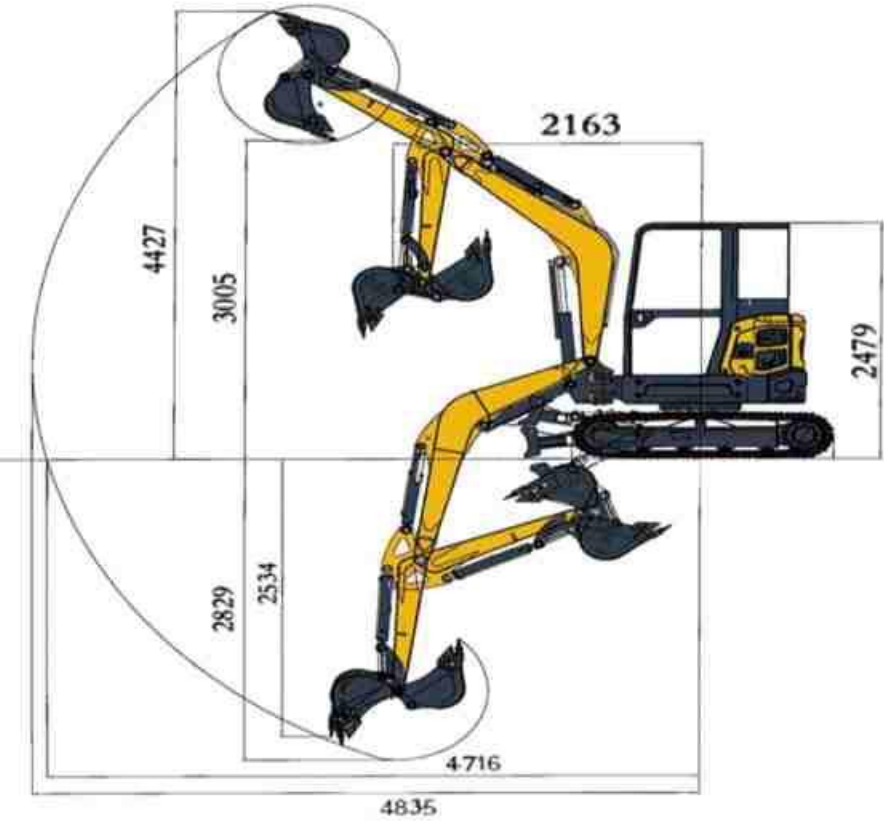
Operation Weight	5940 lbs / 2.7 ton
Digging Bucket Capacity	3.53 cubic FT / 0.1 m³
Engine	KUBOTA D1105
Rated Power	14 KW (19HP) 2000 rpm
Displacement	1.12 L
Max. Bucket Digging Force	5283 lbs (23.5KN)
Max. Arm Digging Force	3147.3 lbs (14KN)
Max. Grade Ability	30°
Fuel Capacity	6.1 gals / 23 L
Operating Pressure	2973.3 PSI (20.5 Mpa)
Hydraulic Flow Rate	26.27 GPM (61.6 L/min)
Hydraulic Oil Capacity	6.34 gals / 24 L
Swing Motor	Danfuss
Swing Speed	0 – 10 RPM
Traveling Motor	Likechuan
Travel Speed (Low/High)	2.6 / 4.5 Km / H
Boom Swing Angel(L/R)	50° / 55°

MAIN DIMENSIONS

Wheelbase	1150 mm/3'9"
Total Length of Track	1250 mm/4'1"
Platform Ground Clearance	566 mm/1'10"
Platform Back Turning Radius	980 mm/3'3"
Chassis Width	1550 mm/5'1"
Track Width	230 mm/9"
Track Height	400 mm/1'4"
Transport Length	4195 mm/13'9"
Seat to Floor Height	1441 mm/4'9"
Overall Height	2480 mm/7'2"

OPERATING RANGE

Max. Digging Radius on Ground	4716 mm/15'6"
Max. Digging Radius	4835 mm/15'10"
Max. Digging Depth	2830 mm/9'3"
Max. Digging Height	4427 mm/14'6"
Max. Unloading Height	3005 mm/9'10"
Max. Vertical Digging Depth	2500 mm/8'2"
Min. Swing Radius	2160 mm/7'1"
Max. Lifting Height of Dozer Blade	308 mm/1'
Max. Digging Depth of Dozer Blade	360 mm/1'2"



Shandong Carti Machinery Co., Ltd

Tel:+86 0537-2330670
Fax:+86 0537-2330670Email: Cartiwell@126.com
Add: Jining High-tech Zone, Shandong Province, China
Note: ue to technological upgrades, the actual product maybediferent from what is shown. Diagrams,photos, and infor-mationare for reference only.

GET THE
1YR/1000HR
FREE
SERVICE

**ORIGINAL
CARTIWELL
TOOL BAG**

For maximum performance
durability and safety



CARTIWELL ALL TERRAIN EXCAVATORS

CW-27S

The powerful digging force of CARTIWELL CW-27S excavator helps you improve the working efficiency.

ISO CE EPA EURO5

EXCAVATOR PERFORMANCE

The CW-27 gets the job done where larger excavators can't maneuver. The tight-tail swing lets you travel through and turn smoothly in tight spaces with ease. Powerful digging forces combined with the ability to simultaneously operate the pilot controlled hydraulic functions make the work day more productive.



POWERFUL DIGGING FORCE

1. The power and torque of engine directly improve the digging efficiency and digging force of excavator.
2. Efficient excavation, strong bucket structure, can withstand high-strength load.



HYDRAULIC STOP VALVE

1. By accurately controlling the flow and pressure of hydraulic oil, the excavator can achieve more accurate digging action and greater digging force.
2. Keep the pressure of the hydraulic system stable.



DOZER BLADE

2. Bulldozer can clear the obstacles on the road and level the road surface.



SIMULTANEOUS OPERATION

Many jobs need to operate the boom, arm bucket and rotation at the same time to achieve efficient operation. There are two variable displacement pumps, which allocate the correct oil flow to each function according to the stroke of the joystick. The ability to operate simultaneously enables continuous high throughput when performing multiple functions at the same time.



SWING BOOM

1. The root of the swing arm is cast in one piece, without any welding marks, which greatly increases the service life.



EXTENDED ORBIT

1. When working in a narrow space, the excavator can expand the working range by adjusting the track direction without changing the overall position.



DRIVING AND MAINTENANCE

The body structure of excavator CW-27 is welded and integrated, and the stability of the whole machine is paid attention to in the design. Through reasonable center of gravity layout and wide crawler design, the working stability on complex terrain is improved.



B.



A.



DRIVING OPERATION

The operation interface design of excavator CW-27 is simple and clear, which is easy for operators to understand and use. This helps to reduce the difficulty of operation and the risk of misoperation, thus improving the safety of operation.



FULLY ENCLOSED CAB

The fully enclosed cab can effectively isolate external noise and dust and create a quiet and clean working environment for the operator.

KUBOTA D1105 ENGINE

1. Efficient fuel economy, the engine usually has high power and torque, which can provide efficient fuel utilization while ensuring power and help reduce fuel consumption, which has great advantages for excavators and other equipment that need to run for a long time.

REAR COVER MAINTENANCE

2. The design of the maintenance access cover on the rear side of the excavator allows operators or maintenance personnel to easily access the internal components of the machine for inspection, maintenance and repair.



C.



LUXURY COMFORTABLE SEAT

Comfortable seats relieve driving fatigue.

ARM AREA

Place your arms during driving to reduce operational errors.

HYDRAULIC PILOT OPERATING SYSTEM

High precision, fast response with long service life.