



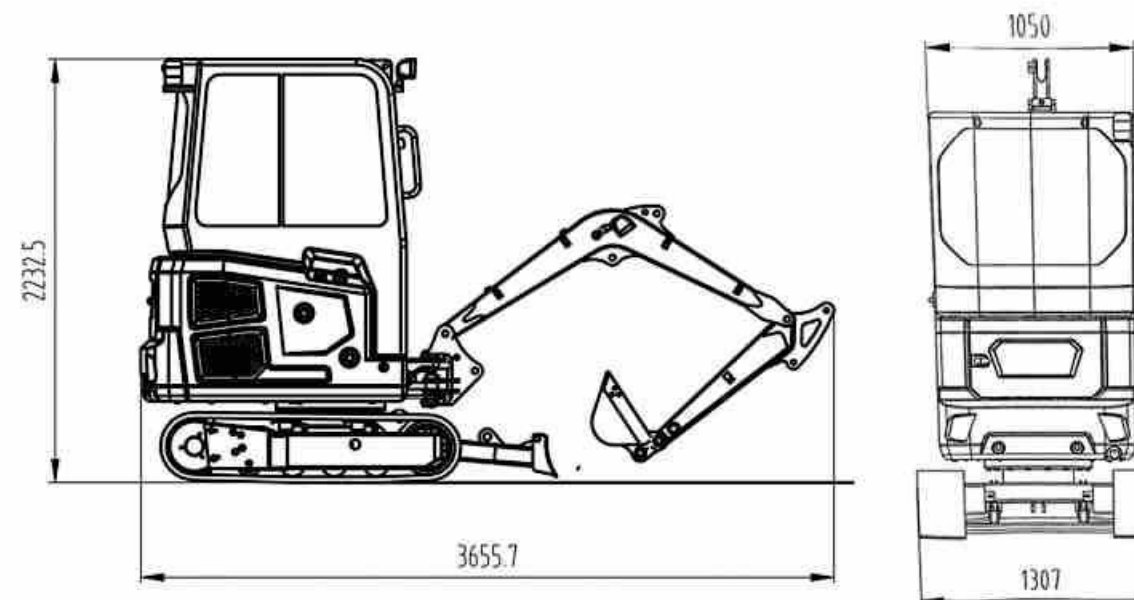
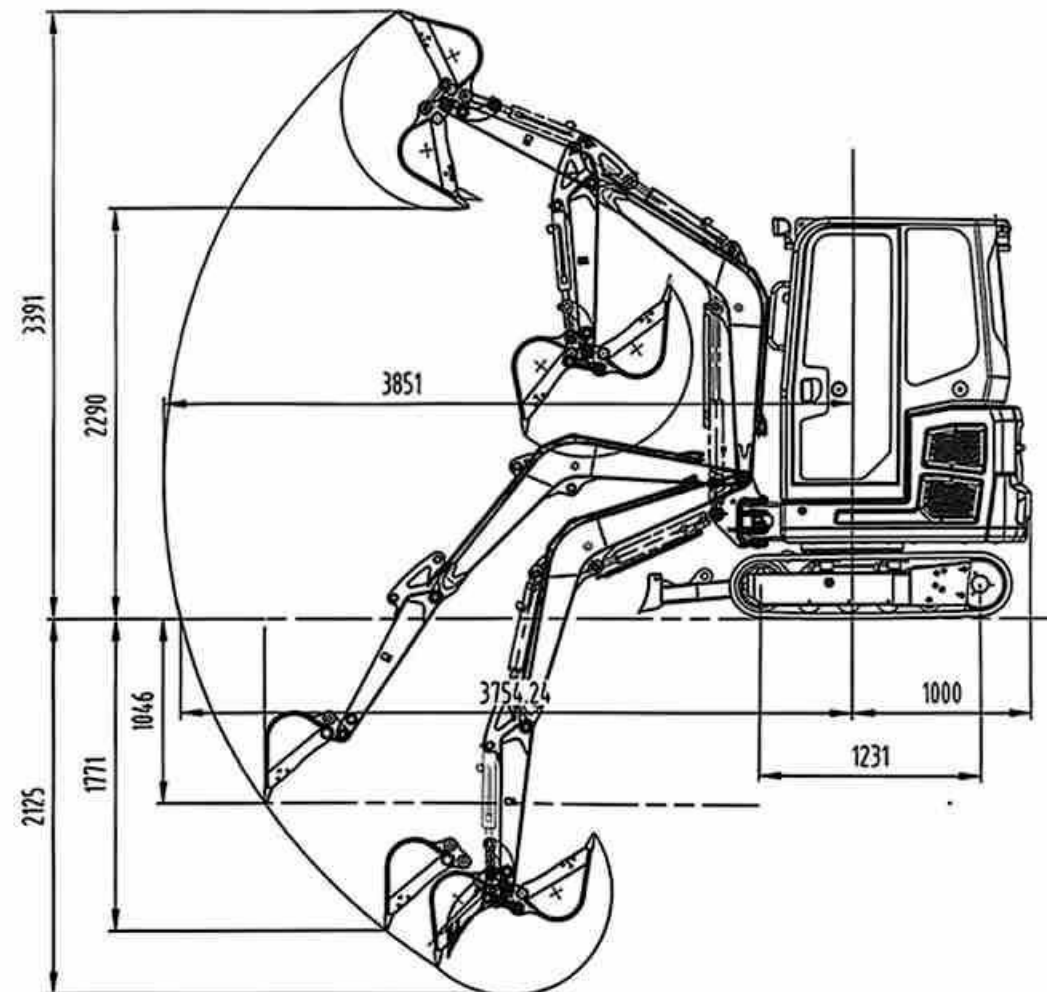
CARTIWELL ALL TERRAIN EXCAVATORS

CW-20S

CARTIWELL CW-20S compact excavator gives you the Performance and efficiency you need in tight spaces.

Oil and walking	
fuel tank	18L
hydraulic oil tank	15L (effective volume)
Engine oil	L
radiator	L
thrust wheel	4 pieces on each side
Track width	230mm
Engine:	
model	KUBOTA D1105
type	Three cylinders, in-line, water-cooled, four-stroke, mechanical pump, naturally aspirated.
rated power	14KW (19HP)
maximum torque	2000rpm
displacement	L

measure	
Overall weight	1860kg/1790 Driving shed
dipper capacity	0.06m³
outline dimension	3740*1050*2250
Maximum excavation height	3365
Maximum unloading height	2385
Maximum excavation radius	3860
Maximum excavation depth	2050
Performance	
Walking speed	2.2/4.3km/h
swiveling speed	12rpm
gradeability	58%
Grounding specific pressure	25kPa
Bucket digging force	kN
Digging force of bucket arm	kN
Hydraulic system pressure	17MPa
Main pump form	two-way gear pump
Main pump flow	39.6L+8.8L



Shandong Carti Machinery Co., Ltd

Tel:+86 0537-2330670

Fax:+86 0537-2330670Email: Cartiwell@126.com

Add: Jining High-tech Zone, Shandong Province, China

Note: ue to technological upgrades, the actual product maybediferent from what is shown. Diagrams,photos, and infor-mationare for reference only.

GET THE
1YR/1000HR
**FREE
SERVICE**

**ORIGINAL
CARTIWELL
TOOL BAG**
For maximum performance
durability and safety

SUPERIOR PERFORMANCE

The CW-20S gets the job done where larger excavators can't maneuver. Powerful breakout forces combined with the ability to simultaneously operate the pilot controlled hydraulic functions make the work day more productive.

Improve work efficiency



Shake handle operation

The control levers of the CW-20S are positioned to the sides of the seat for a better, more relaxed operator working posture and excellent forward visibility.



hydrocylinder

The hydraulic system provides power through the hydraulic motor, thus rotating the upper structure of the excavator. This design enables the CW-20S to flexibly adjust its working direction and work in different areas without moving the whole fuselage.



Powerful breakthrough force

CW-20S provides impressive bucket digging force. The powerful and balanced design of the stick and bucket enables the operator to dig faster and deeper (**2125 mm**) even under the worst conditions. The working scope and excavation depth are excellent.

More advantages



360° Rotate



Long Life



Low Consumption



Digging arm

After special design, the digging ability of the digging arm is significantly better than that of the standard arm, and it can bear large digging force and resistance, so as to ensure that it will not be deformed or damaged during the operation.



hydraulic hose

The hydraulic hose transmits the hydraulic oil output by the hydraulic pump to each hydraulic cylinder and hydraulic motor of the digging arm, thus driving the digging arm to dig, lift and rotate.



One-piece casting swing arm root

The hub of the swing arm root used in CW-20S is integrally cast, and there is no welding trace, which greatly improves the efficiency and service life.

Fully enclosed cab

Equipped with a fan system and luxurious comfortable seats, it ensures the operator to work in a comfortable environment, and the closed design can protect the operator from the external splash.

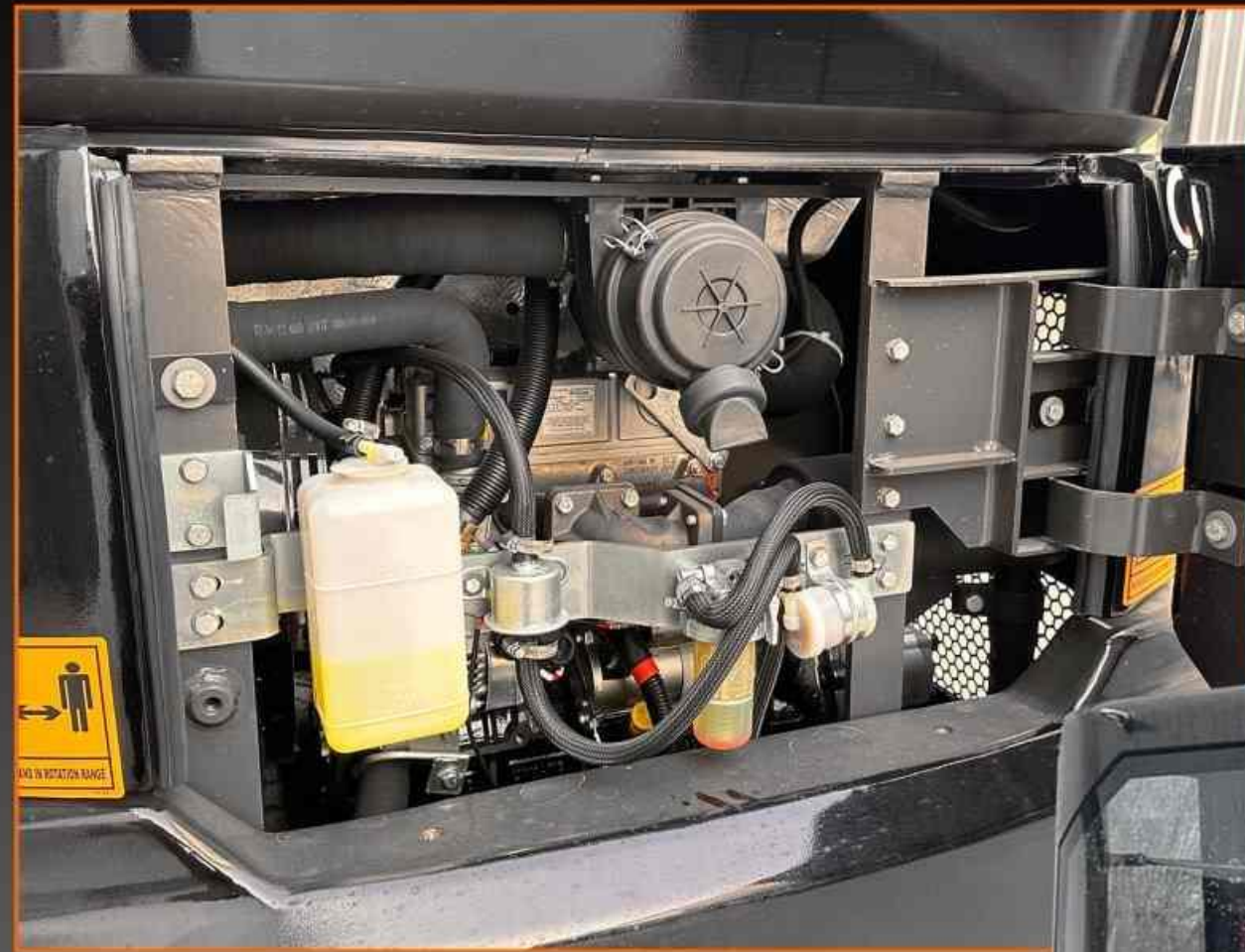


SERVICE

Thanks to a full-opening engine cover that provides easy access to the engine and a conveniently located and protected hydraulic service port pipes, maintenance is simple.

Full Opening Engine Cover

The engine cover's tilt-up operation exposes most of the engine providing easier access to components.



Kubota original engine

CW-20s provides more power and reliability for your work. The power of the engine is matched with the capacity of the hydraulic system to maximize the digging and lifting performance.



Track expansion function

The press motor drives the expansion device, so that the crawler can expand and contract in a certain range, thus adjusting the walking width and stability of the excavator.



CARTIWELL/CW-20S

Complete research and development test system

- each excavator must undergo more than 2000 hours of field excavation force test.
- Core components such as working device, cab and hydraulic components must undergo more than 800,000 anti-fatigue tests.



Chassis side swing function

By adjusting the chassis length and yaw angle, the position of the center of gravity of the excavator can be optimized and its stability in the operation process can be improved. This is of great significance to prevent rollover and ensure the safety of operation.



Wear rubber caterpillar

The rubber crawler has better rotation ability, is not easy to slip and drift, and increases the stability of the equipment, and can better adapt to various uneven terrain, such as complex terrain such as mountains and hills, and has wider applicability.

Support color accessories customization

